

**KOTHARI INTERNATIONAL SCHOOL, NOIDA**  
**ANNUAL EXAMINATION, SESSION: 2025-26**  
**GRADE: 7 SUBJECT: SCIENCE**  
**SET A SECTION A (OBJECTIVE)**

**DAY & DATE: TUESDAY – FEBRUARY 24, 2026**

**MAXIMUM MARKS: 20**

**NAME: \_\_\_\_\_**

**TIME ALLOTTED: 30 MINUTES**

**ROLL NO: \_\_\_\_\_**

**GENERAL INSTRUCTIONS:**

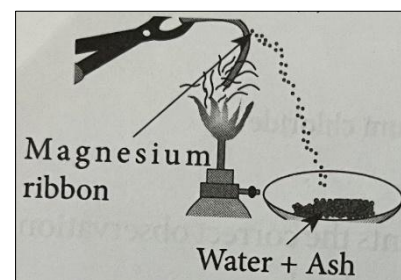
- i. This question paper consists of 4 pages and contains 20 questions.
- ii. Read the question carefully and then attempt it.
- iii. All questions are compulsory.

**SECTION A**

Q1. Observe the given figure carefully and select the correct statement(s).

- I. Magnesium ribbon burns with a dazzling white flame.
- II. The ash formed is powdered magnesium only.
- III. The solution formed is MgO.
- IV. The solution turns blue litmus red.

- a) I only.
- b) III only.
- c) II and III only.
- d) I and IV only.



Q2. Rahul has classified a few changes around us as shown in the table.

S.no.	Change	Type of change
1.	Browning of sliced brinjal	Physical,irreversible
2.	Getting pure crystals of copper sulphate from saturated solution of copper sulphate	Physical,reversible
3.	Baking of a cake	Chemical ,reversible
4.	Respiration	Chemical,irreversible
5.	Making sugar solution	Physical,reversible

The changes classified correctly are:

- a) 3 and 5 only
- b) 1 and 5 only
- c) 2,4 and 5 only.
- d) 2 and 4 only

Q3. Which of the following options contain names of terms associated with female reproductive parts only?

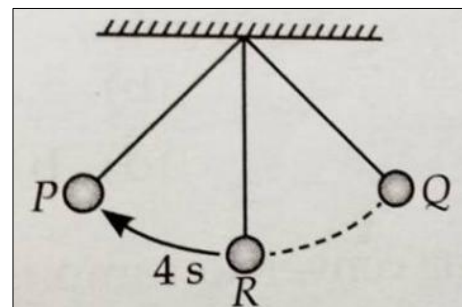
- a) Stigma, Filament, Ovary
- b) Anther, Stigma, Style
- c) Stigma, Style, Ovary
- d) Anther, filament, Style

Q4. Which of the following is a post-fertilisation event in flowering plants?

- a) Formation of flower
- b) Transfer of pollen grains
- c) Formation of Pollen grains
- d) Embryo development

Q5. If the time taken by the bob of a pendulum to move from point R to P is 4s, then the time taken by it to complete its one oscillation is \_\_\_\_.

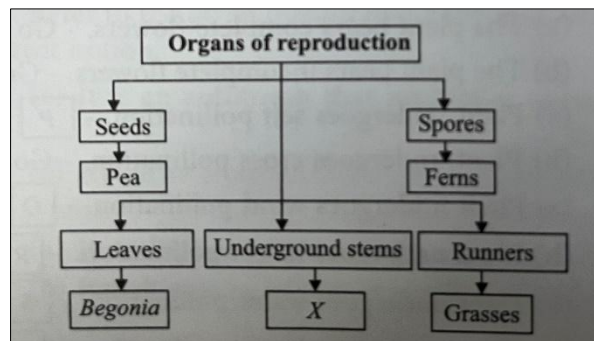
- a) 8 s  
 b) 12 s  
 c) 16 s  
 d) 4 s



Q6. Rohan drew a flow chart as shown below to list some plants based on their organs of reproduction.

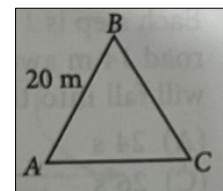
Which of the following statements is correct regarding this?

- a) The plant X can either be Dahlia or ginger.  
 b) Ferns have been classified incorrectly and grasses should be placed there.  
 c) Begonia has been classified incorrectly as it reproduces by stem.  
 d) The plant X can either be ginger or turmeric.



Q7. A boy moves along an equilateral triangular track of side 20 m as shown in the figure. He starts from point A and reaches point C through point B. The distance and displacement of the boy is \_\_\_\_.

- a) 40 m, 40 m  
 b) 20 m, 20 m  
 c) 20m, 40 m  
 d) 40m, 20 m



Q8. Which of the following statements illustrate uniform motion?

- a) A vehicle moving along a straight line with constant speed.  
 b) A car covering a distance of 10 km in each hour.  
 c) A ball moving along a smooth surface without any external force.  
 d) All of the above.

Q9. A brief description about four substances W, X, Y and Z is given as :

W: Colourless in acidic solution

X: Main component of vitamin C

Y: Used in lead storage batteries

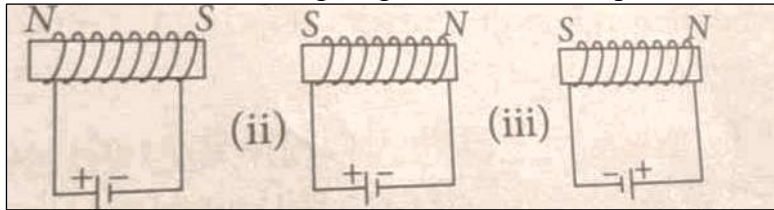
Z: Gives tamarind its sour taste

Which of the following best represents W, X, Y and Z?

W	X	Y	Z
a) Methyl orange	Citric acid	Sulphuric acid	Tartaric acid
b) Phenolphthalein	Ascorbic acid	Sulphuric acid	Tartaric acid
c) Phenolphthalein	Citric acid	Hydrochloric acid	Ascorbic acid
d) Methyl orange	Ascorbic acid	Hydrochloric acid	Citric acid

- Q10. Choose the correct statement. 1
- China rose indicator will give green colour with lime water.
  - Methyl orange will give red colour with curd.
  - Phenolphthalein will give pink colour with slaked lime.
  - All of these.

- Q11. In which of the following diagrams, the correct poles of the electromagnet are indicated? 1



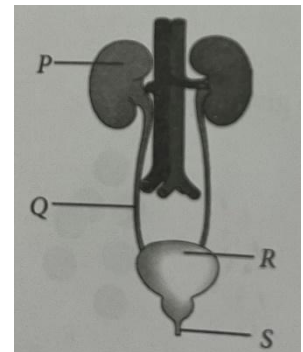
- (ii) only
- (ii) and (iii)
- (i) only
- All of the above

- Q12. An MCB which cuts off the electricity supply in domestic circuit in case of short-circuiting or overloading works on the principle of \_\_\_\_\_. 1

- Chemical effect of current
- Heating effect of current
- Magnetic effect of current
- Both (B) and (c)

- Q13. Refer to the given figure. 1  
Select the option that correctly identifies P, Q, R and S.

- |    | P       | Q       | R               | S               |
|----|---------|---------|-----------------|-----------------|
| a) | Kidney  | Urethra | Ureter          | Urinary Bladder |
| b) | Kidney  | Ureter  | Urinary Bladder | Urethra         |
| c) | Kidney  | Urethra | Urinary Bladder | Ureter          |
| d) | Urethra | Ureter  | Kidney          | Urinary Bladder |



- Q14. Select the incorrect statement(s). 1

- Sponges do not possess any circulatory system.
- Bony fish and snakes excrete uric acid as excretory products.
- Sweat contains water and salts.
- Sweating helps in maintaining the body temperature.
- Urea is filtered in the body by villi.

- Only (iii)
- Only (ii)
- (ii) and (iv)
- (ii) and (v)

- Q15. A marble tile feels colder than a wooden tile on a winter morning, because the marble tile because it \_\_\_\_\_. 1

- is a better conductor of heat than the wooden tile.
- is polished while wooden tile is not polished.
- reflects more heat than wooden tile.
- is a poor conductor of heat than the wooden tile.

- Q16. The transfer of heat by convection can take place in \_\_\_\_\_.
- a) Solids and liquids.
  - b) Solids and vacuum
  - c) Gases and liquids
  - d) Vacuum and gases

1

### SECTION B

**Each question consists of two statements, namely Assertion (A) and Reason (R).**

**For selecting the correct answer use the following code: (Please write the correct option in the box. Do not write the full sentence)**

- (a) Both Assertion (A) and Reason (R) are the true and Reason (R) is a correct explanation of Assertion (A).**
- (b) Both Assertion (A) and Reason (R) are the true but Reason (R) is not a correct explanation of Assertion (A).**
- (c) Assertion (A) is true and Reason (R) is false.**
- (d) Assertion (A) is false and Reason (R) is true.**
- (e) Both Assertion (A) and Reason (R) are incorrect.**

- Q17. Assertion: There are two types of blood vessels: arteries and veins are present in the body.  
Reason : Arteries carry blood away from the heart to all parts of the body.

1

- Q18. Assertion : A reaction between water and quick lime is a chemical change.  
Reason : On adding water to quick lime, heat is evolved with the formation of a new compound called sodium hydroxide.

1

- Q19. Assertion: A salt is produced when an acid is neutralised by a base.  
Reason: A salt can be acidic, basic or neutral.

1

- Q20. Assertion : Rechargeable batteries can be recharged by providing them appropriate current.  
Reason: In a bulb, the filament is broken when a small current is passed through the bulb.

1