

KOTHARI INTERNATIONAL SCHOOL, NOIDA
ANNUAL EXAMINATION, SESSION: 2025-26
GRADE: 11 SUBJECT: FASHION STUDIES (837)

DAY & DATE: WEDNESDAY, FEBRUARY 11, 2026

MAXIMUM MARKS: 60

SET A

TIME ALLOTTED: 3 HOURS

NAME: _____ ROLL NO: _____

GENERAL INSTRUCTIONS:


- i). All questions are compulsory. Please read the instructions carefully.*
- ii). Question paper consists of 24 questions and is divided into two sections – A and B.*
- iii). Section A has Objective type questions whereas Section B contains Subjective Type questions.*
- iv). Out of the given (6 + 18 =) 24 questions, a candidate has to answer (6 + 11 =) 17 questions in the allotted (maximum) time of 3 hours.*
- v). All questions of a particular section must be attempted in the correct order.*
- vi). SECTION A – OBJECTIVE TYPE QUESTIONS (30 MARKS):*
 - a) This section has 6 questions.*
 - b) There is no negative marking.*
 - c) Do as per instructions given.*
 - d) Marks allotted are mentioned against each question.*
- vii). SECTION B – SUBJECTIVE TYPE QUESTIOND (30 MARKS)*
 - a) This section has 18 questions.*
 - b) A candidate has to do 11 questions.*
 - c) Do as per instructions given*
 - d) Marks allotted are mentioned against each question/part.*

SECTION – A

OBJECTIVE TYPE QUESTIONS

I.	Answer any 4 out of the given 6 questions on Employability Skills (1 X 4 = 4)	
Q1.	A _____ is a detailed plan of what entrepreneurs want to achieve in a company and how to achieve it? Ans: business plan	(1)
Q2.	Why are grooming and personal hygiene important? Ans: To look well presented, clean and to stay healthy.	(1)
Q3.	The _____ functions similarly to a court in disputes involving	(1)

	environmental preservation, forest conservation and natural resource conservation. Ans: National Green Tribunal	
Q4.	In SMART goals, what does ‘R’ refer to? A. Required B. Relevant C. Replaceable D. Replicable	(1)
Q5.	Which of the following is the default alignment of text? A. Left B. Right C. Centre D. Justify	(1)
Q6.	Which of the following method is used to receive information from the sender? A. speaking B. writing C. listening D. telling	(1)
II.	Answer any 5 out of the given 7 questions (1 X 5 = 5)	
Q1.	_____ is a method wherein body or dress form measurements are taken for developing a pattern a) Block Method b) Proportionate Systems c) Flat Pattern Method d) Draping Method	(1)
Q2.	What is a ‘french curve’ used for? To draw the curved lines of a pattern.	(1)
Q3.	How will you measure Crotch depth on dress form? Ans: On dress form – Place an L-square between legs of form and note the measurement at waistline. This measurement includes 1¼ ” ease as the L-square is generally 1¼” wide.	(1)

Q4.	_____ ease of a garment is related to direct contact with the body and is responsible for the comfort factor. (Fitting)	(1)
Q5.	 What does this symbol denote on a pattern? Button hole	(1)
Q6.	Define apparel fit. Apparel fit is the relationship between the size and contour of garment and those of the human body.	(1)
Q7.	_____ ease is the extra fullness added to the garment over and above the wearing ease to create certain silhouette or style. (Design)	(1)
III.	Answer any 6 out of the given 7 questions (1 X 6 = 6)	
Q1.	Define fit. Fit can be defined as a simple matter of length and width in each part of the pattern that is correct for the human figure.	(1)
Q2.	A _____ is a weave that repeats on three or more ends and picks and produces diagonal lines on the face of the fabric. (twill)	(1)
Q3.	Which of the following fibres is thermoplastic in nature? A. Wool B. Polyester C. Cotton D. Silk	(1)
Q4.	_____ - is the process of coloration of textile materials by immersing them in an aqueous solution of dye. (dyeing)	(1)
Q5.	Acid and _____ dyes can dye protein fibres like wool and silk. A. Direct B. Sulphur C. Reactive D. Vat	(1)
Q6.	For printing _____ and _____ are required as the colorant. (Dyes and pigment)	(1)
Q7.	These fibres have high strength, are resistant to chemicals and can withstand high temperatures without degradation. For example, they are used for bullet proof vests.	(1)

	<p>A. Natural fibres</p> <p>B. Man-made fibres</p> <p>C. Blended fibres</p> <p>D. High-performance fibres</p>	
IV.	Answer any 5 out of the given 6 questions (1 X 5 = 5)	
Q1.	<p>During the weaving process, the separation of the warp threads into two layers to form a tunnel is known as:</p> <p>A. Beating</p> <p>B. Shedding</p> <p>C. Picking</p> <p>D. Felting</p>	(1)
Q2.	<p>Acacia gum, Gum Arabic or gums from starches are used as _____ in printing. (thickener)</p>	(1)
Q3.	<p>What is the role of aesthetics in a well-designed product?</p> <p>A. It is important but not as important as function and salability</p> <p>B. It is the only important factor</p> <p>C. It is not important at all</p> <p>D. It is only important in art, not in design</p>	(1)
Q4.	<p>How do diagonal lines affect a composition?</p> <p>A. They create movement and depth</p> <p>B. They form an enclosed space</p> <p>C. They signify subjective forces</p> <p>D. They create a static and tranquil appeal</p>	(1)
Q5.	<p>Ritvik got a red coloured bottle, a pink coloured pouch and a maroon coloured bag for himself. What colour scheme is depicted in his choice?</p> <p>A. Triadic</p> <p>B. Analogous</p> <p>C. Monochromatic</p> <p>D. Complementary</p>	(1)

Q6.	What is the purest form of any colour? (Hue)	(1)
V.	Answer any 5 out of the given 6 questions (1 X 5 = 5)	
Q1.	Which colour is the colour of heaven, a quiet silence, purity and presence of God? A. White B. Red C. Blue D. Yellow	(1)
Q2.	Visual equality of positive and negative spaces in design is termed as _____. (balance)	(1)
Q3.	What are abstract shapes? Ans: Whenever an original shape is modified to change its character, the new changed shape is called an abstract shape.	(1)
Q4.	An element of design characterised as a mark with length and direction is termed as _____. (line)	(1)
Q5.	What does SPI stand for? (Stitch per Inch)	(1)
Q6.	The oldest leather product in India is _____ used to carry water. (Mashak)	(1)
VI	Answer any 5 out of the given 6 questions (1 X 5 = 5)	
Q1.	What happens if a lockstitch breaks during use? A. The stitch does not open up because the two threads are locked together B. The stitch becomes more conspicuous C. The fabric becomes damaged D. Both B and C	(1)
Q2.	_____ is the narrow rectangular piece across the length of a table, on which serving bowls are placed. (Runner)	(1)
Q3.	Seema wore a garment while cooking over the clothes to avoid soiling them. Named as A. coaster B. apron C. napkin	(1)

	D. placemat	
Q4.	_____ is a semi-circular disc with a hole to allow needle to pass through it. A. Throat-plate B. Feed dog C. Needle bar D. Bobbin	(1)
Q5.	Size _____ is used for very heavy weight and dense fabrics. A. 18 B. 10 C. 7 D. 3	(1)
Q6.	In a sewing machine, the amount of pressure needed depends on the _____ and thickness of the material. A. height B. length C. thinness D. weight	(1)
<u>SECTION – B</u>		
Answer any 3 out of the given 5 questions on Employability Skills (2 x 3 = 6 marks) Answer each question in 20 – 30 words.		
Q7.	Your friend is not able to say NO to anyone and keeps adding his work and is not able to complete his own work. Guide him with steps using AEIOU Model to learn to say NO in a polite manner. Ans: A – Ask questions about the importance of the task. E – Express your feelings. Be polite I – Inform the other person your reasons for saying NO O – Offer the options U – Reach a mutual understanding	(2)
Q8.	What is the role of NGT?	(2)

	<p>Ans: The National Green Tribunal functions similarly to a court in disputes involving environmental preservation, forest conservation and other natural resource conservation. It adjudicates environmental disputes and may levy substantial fines on those who cause environmental harm, take action to stop and rectify environmental damage, or even imprison such individuals.</p>	
Q9.	<p>Explain how perseverance and confidence make an entrepreneur successful?</p> <p>Ans: Perseverance means not giving up and continuing even when difficult situations arise. There are many challenges, learns from them and move on, no matter what. Entrepreneurs need to stay optimistic and motivated when things get tough. While working hard, an entrepreneur also needs to think about improvement and growth. Perseverance doesn't mean doing the same process over and over again. It means finding different and creative ways to overcome difficulties and always thinking about achieving the goal no matter what happens along the way.</p> <p>Confidence means believing in yourself and your approach. Confidence helps business owners take the first step to start a new business, and then try new things to grow their business. It encourages entrepreneurs to continue even if they fail. Confidence also encourages business owners to visit customers and seek feedback on their products or services. Feedback helps entrepreneurs further improve and grow their business.</p>	(2)
Q10.	<p>Explain the procedure of setting goals.</p> <p>Ans: Goals can be set using the SMART model, which refers to:</p> <ul style="list-style-type: none"> • S – Specific – Define a clear, specific goal • M – Measurable – To ensure you can track progress • A – Attainable – Create a goal that is realistic • R – Relevant – Ensure your goal aligns with your organisation • T – Time-bound – Assign a target date to keep accountability 	(2)
Q11.	<p>Write any two advantages of a word processor.</p> <p>Ans: There are many advantages to using a word processor. Here are few of them:</p> <ol style="list-style-type: none"> a) If you want to add or remove text after the report has been reviewed by the teacher, you can easily do it in a Word document. b) When creating your CV (resume/biodata), it is important that you do not misspell any words in it. A word processor helps you check spellings and grammar. c) If you create a long report and need to work for a few days, you can save the report and use it when you need it. d) You can also print the document e) You can make your document attractive by adding different colours, text styles and text sizes. 	(2)

	Answer any 3 out of the given 5 questions in 20 – 30 words each (2 x 3 = 6 marks)	
Q12.	<p>What is a General Sizing System? Elaborate on UK Sizing System.</p> <p>Ans: A General Sizing System for apparel for a country is based ideally on the body measurements taken from a cross section of the population.</p> <p>UK: British Specification for size designation of women’s wear is indicated by BS3666.</p> <p>The size is suffixed with S and T which denotes whether it is for short or tall person. Buyers in UK can easily buy clothes in their size if they know their own size generally all the garments of that particular size would fit the person.</p>	(2)
Q13.	<p>What is warp and weft in a woven fabric?</p> <p>Ans: Weaving is the process of interlacement of two sets of yarn that are perpendicular to one another. The set of threads that are inserted in the fabric in the horizontal direction is termed the ‘weft’. The set of threads that runs down the fabric in the longitudinal direction is termed as ‘warp’.</p>	(2)
Q14.	<p>Differentiate between plain and twill weave. Draw diagrams.</p> <p>Ans: Plain weave: is the least complex intertwining design that can be produced. It is produced by alternatively lifting and bringing down one warp thread across one weft thread. The yarns don’t lie straight with the fabric because the warp and weft have to twist around one another when they are intertwined.</p> <p>Twill is a weave that repeats on at least three closures and picks and produces diagonal lines on the face of a fabric. The course of the inclining lines on the fabric’s outer layer is mostly seen along the warp direction. Denim and jeans are common examples of twill weave.</p>	(2)
Q15.	<p>What do you understand by the term ‘colour palletete’ and explain its relevance in design?</p> <p>Ans: A colour palette is a mixture of colours, which go together and might be used to produce or create various colours in the same design that forms an individual collection. These colours complement one another so that a visually attractive appearance is created.</p>	(2)
Q16.	<p>Explain the purpose of any two of the following parts of sewing machine:</p> <p>a) Bobbin</p> <p>b) Feed Dog</p> <p>c) Presser Foot</p> <p>Ans: It is important for the beginner to know and recognize the different parts of the</p>	(2)

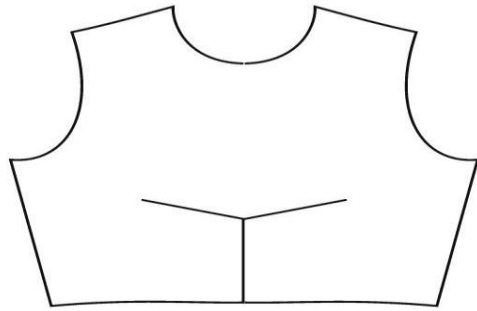
	<p>sewing machine.</p> <ol style="list-style-type: none"> 1. Bobbin: A small metal spool that holds the lower thread supply. 2. Feed Dog: A small metal device under the presser foot that has teeth which carries the material along as it is stitched. It moves the material forward by one stitch length after each stitch has been drawn. 3. Presser Foot: A foot which is used to hold the fabric while stitching. It is detachable and different types of foot are available for different functions e.g. zipper foot, plastic foot. 	
	Answer any 2 out of the given 3 questions in 30– 50 words each (3 x 2 = 6 marks)	
Q17.	<p>What are the advantages and limitations of synthetic dyes.</p> <p>Ans: Advantages:</p> <ol style="list-style-type: none"> 1. A small amount of colourant is required to dye a large quantity of textile material 2. An entire range of shades can be achieved with synthetic dyes 3. The shades can easily reproduced so that similar shade is achieved on repeated dyeing 4. The dyes like reactive, vat and disperse have excellent fastness properties <p>Limitations</p> <ol style="list-style-type: none"> 1. Synthetic dyes also require electrolytes and auxiliaries for dyeing 2. The waste water from the dye house needs to be treated for proper effluent control to reduce water and soil pollution 	(3)
Q18.	<p>While working on the machine safety is important. List down any 6 Safety rules.</p> <p>Ans: The safety Rules to be observed while working on the machine: Safety is important to everyone and it is one's responsibility to maintain a safe working place:</p> <ol style="list-style-type: none"> 1. When operating the machine, do not be careless. 2. Always inspect the machine before starting the work. Be sure it is clean and threaded correctly, with no loose threads on the pulley belt and all guards in place. 3. Report any injuries or accidents immediately to the teacher. 4. Wipe up any oil spilled on the floor immediately to prevent anyone from slipping. 5. Operate machines only with permission. 6. When sewing on a power machine, wear low shoes and well-fitting clothing. 7. Avoid loose-fitting sleeves, jewellery, ties and ribbons when operating the machine. If your hair is long, tie it at the back. 8. Do not tilt your chair forward or backward while operating the machine. 9. Use both hands to raise and lower the machine head. 10. Always keep your head above the table. 	(3)

	<ol style="list-style-type: none"> 11. Keep your feet off the treadle when you are not operating the machine. 12. Keep your feet off the treadle when you are setting or threading the needle. 13. Turn the motor off when you are not stitching. 14. Turn the motor off before cleaning, oiling or adjusting the machine. 15. Turn the motor off before removing or replacing the pulley belt and run the machine out. Wait until all motion has stopped. 16. Turn the motor off in case of an emergency or when in doubt. 17. Turn the motor off before unplugging the machine. 18. Do not use your hand to stop and start the handwheel. 19. Use your hand only to set the handwheel. 20. Before operating the machine, close the slide bed cover. 21. When operating the machine, keep your hands, scissors and other sharp objects away from the belt. 22. Keep the machine and work station clean with all tools in the side drawer. 23. Unplug the machine at the end of the day. 24. Know the location of the main power switch, outlets and fuses in case of an emergency. 25. Do not remove any safety devices from the machines. 26. Turn off the pressing iron at the end of the class. 27. Always place the pressing iron on the iron pad to avoid burning the ironing board cover. 28. When trimming or cutting, put all trimmings in the wastebasket. 29. Never toss or throw scissors or equipment. Scissors should be handed to another person with the handles toward the person. 30. Do not eat or drink in the work area. 	
<p>Q19.</p>	<p>Explain any two colour schemes with examples.</p> <p>Ans: Triadic Colour Scheme – Any three colours with a balanced triangle relationship constitute a triadic colour scheme. Three equidistant colours on the colour scheme form a basic triad. Eg: red, yellow, blue</p> <p>Complementary Colour Scheme – any two colours which are situated directly opposite to each other such as red-green, yellow-violet</p> <p>Analogous colour Scheme – Any three colours that are placed side by side on a colour scheme. Eg: yellow, yellow-green, green</p> <p>Monochromatic Colour Scheme – A single colour combination is used with its tints, shades and tones.</p>	<p>(3)</p>
	<p>Answer any 3 out of the given 5 questions in 50– 80 words each (4 x 3 = 12 marks)</p>	
<p>Q20.</p>	<p>Define Apparel Fit and identify elements of Fit.</p> <p>Ans: Apparel fit is the relationship between the size and contour of garment and those of the</p>	<p>(4)</p>

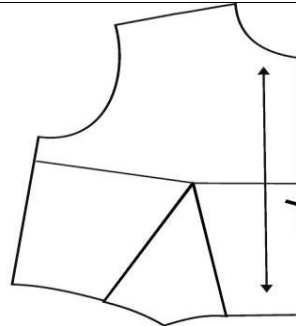
	<p>human body. A well fitted garment is a garment that hangs smoothly and evenly on the body with pleasing proportions, with no pulls or distortion of the fabric, even seams with no gaping, no constriction of the body and adequate ease for movement. Hems are parallel to the floor unless otherwise intended, and the garment armscye and crotch seam do not constrict the body.</p> <p>Evaluation of Fit is based on five elements:</p> <ul style="list-style-type: none"> ● Grain: For a good fit the garment should be cut <i>on grain</i> i.e. The right grain of the fabric. ● Set: This refers to a smooth fit without undesirable wrinkles. ● Line: This refers to the alignment of the structural lines of the garment with the natural lines of the body. ● Balance: When the garment is balanced, it is in equilibrium. The right and left side of the garment appear evenly balanced or symmetrical when viewed from the front, back or side. <p>Ease: This refers to the amount of „roominess“ in a garment. Ease is the difference between the measurements of the body of the wearer and the measurements of the garment.</p>	
Q21.	<p>Explain any two of the following:</p> <ul style="list-style-type: none"> a) Rhythm and its types with examples b) Balance and its types with examples c) Contrast and its types with examples <p>Ans: The fundamental principles of design are as follows:</p> <ul style="list-style-type: none"> ● RHYTHM: There is a rhythm that is audible in while walking, running, and breathing; in the seasons, phases of moon, tides of the sea, sounds of animals, birds and insects. Rhythm is the recurrence of design elements often with specific intervals between them that conveys a sense of movement to the observer. The principle of rhythm is used to arrange the elements for creating patterns and textures. Rhythmical repeats are found in age-old craft techniques like basket making, weaving and knitting. There are three different kinds of rhythm: <ol style="list-style-type: none"> 1. Regular Rhythm: A design is governed by principle of regular rhythm when an element or a set of elements is repeated at regular intervals. 2. Progressive Rhythm: A progressive rhythm encompasses visual sequencing of forms through progression of steps. This effect is often achieved by increasing or decreasing occurrence of design elements. 3. Flowing Rhythm: It is defined as visual movement relates to continuance of an element used in design creation. This kind of visual rhythm is often more organic in nature. An interesting example of flowing rhythm in lifestyle products. ● BALANCE: Balance relates to the visual weight of elements within a design. It is 	(4)

	<p>defined as harmonious relationship between the positive and negative spaces of a design. In other words, the attribute of balance is experienced due to visual equality of positive and negative spaces. Balance can be symmetrical or asymmetrical.</p> <ol style="list-style-type: none"> 1. Symmetrical Balance: This balance occurs when the visual weight of a composition is evenly distributed on both sides of vertical axis of symmetry or horizontal axis or diagonal axis in a design. This implies the formation of identical mirror images on both sides of the axis. 2. Asymmetrical Balance: There is asymmetrical balance when there is no mirror image on either side of the axis of symmetry but the visual weight on either side of the axis appears to be evenly distributed. It involves the arrangement of elements with different sizes and characteristics in a way that they balance one another with their respective visual weights. For an example several smaller forms in a design counterbalance a dominant form on the other side. Usually asymmetrical designs tend to have a greater sense of visual interest due to their heterogeneous appeal. Asymmetric balance in lifestyle and decorative products. <ul style="list-style-type: none"> • CONTRAST: Contrast is defined as the principle that guides the arrangement of opposing elements in a design. Contrast is associated with focusing the attention on the composition of a design through the comparison of its constituent elements. It shows an interesting arrangement of multiple elements based on their prioritized visual importance. Contrast can be achieved in the following ways: <ol style="list-style-type: none"> 1. Size Contrast: Elements of same shape are used in different sizes. 2. Texture Contrast: Elements of same shape and same size are used with different textures. 3. Shape Contrast: Elements of different shapes are used in approximately the same size. 4. Colour Contrast: Elements of same shape are used in different colours. 5. Value contrast: Elements of the same shape are used in different values of same colour. 6. Position Contrast: The elements of same shape are used in different positions or angles. 	
Q22.	<p>Differentiate between lockstitch power machine and lockstitch home sewing machine.</p> <p>Ans: Lockstitch machines are broadly classified into two types – the lockstitch power machine and the lockstitch home sewing machine. They are quite similar to each other but with some important differences:</p> <ol style="list-style-type: none"> 1. The power sewing machine is much faster as it stitches an average of 5000stitches per minute. An average home sewing machine makes no more than800 stitches while a hand sewing machine would stitch a maximum of 300 stitches per minute. 2. The presser foot in a power machine is controlled with a knee lift, but in a home sewing machine it is operated manually using a lever at the back of needle bar. 3. The throat plate in a home sewing machine is often marked with seam guides which an industry machine does not have. 4. In the industrial sewing machine or power machine the presser foot has an arrow 	(4)

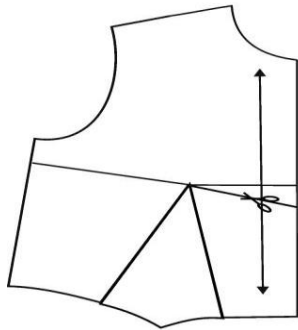
	<p>opening between the two toes and it holds fabric more securely and firmly.</p> <p>5. The industrial sewing machine or power machine has a small and round needle hole on the throat plate than the home sewing machine, which is large and oval. This reduces stitching problems.</p>	
Q23.	<p>Write about various ingredients used in the printing textiles with their role.</p> <p>Ans: Role of the various ingredients used in the printing of textiles are:</p> <ul style="list-style-type: none"> • Dye/Pigment – the main colouring compound • Water – A modest quantity of water is required in printing to break down the dye into the print glue. Water is convenient and easily accessible medium to mix and scatter dye molecules in the thickener. • Thickener – The purpose of the thickener is to produce a mechanism for the dye paste. The consistency of the printing glue is vital as it influences the lucidity and profundity of the printed design. Eg: gum Acacia, gum Arabic, sodium alginate, polyvinyl alcohol, etc. • Steam – Steaming guarantees satisfactory entrance of the dye molecules in the fibre. Steaming gives energy to the dye molecules to enter the fibre structure. Steaming also helps in expanding the fibre so that the dye from the print paste can enter the polymer framework. • Dry heating – Thermoplastic fibres more often are not hydrophobic and don't expand adequately in water when exposed to steaming. Dry heating softens the fibre and permits the dye molecules to go into the indistinct region of the fibre structure. • Washing off – Washing is done to eliminate the thickener and other printing paste from the outer layer of the fabric after the printing process. 	(4)
Q24.	<p>Draw and explain Dart Manipulation from Waist dart to Centre Front.</p> <p>Ans: Take one dart bodice block. Slash the new dart position, close the old dart. Trace the pattern on separate sheet.</p>	(2+2)



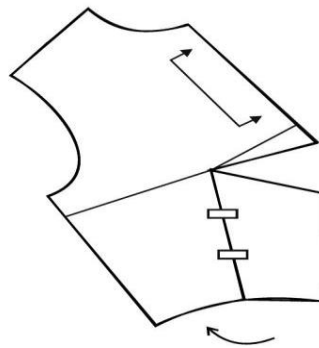
Design



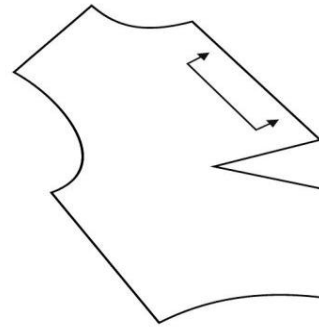
One Dart Block



Step -1



Step -2



Step -3