

KOTHARI INTERNATIONAL SCHOOL, NOIDA
TERM END ASSESSMENT, 2023-2024
GRADE 7: SUBJECT: SCIENCE
SET: A
SECTION B (SUBJECTIVE PAPER)

DAY/DATE: THURSDAY, 7/03/2024

TIME ALLOWED: 2.5 Hour

NAME: _____

MAXIMUM MARKS: 60

CLASS : _____

ROLL NO. _____

GENERAL INSTRUCTIONS:

1. This question paper consists of 4 pages and 10 question.
2. Read the question paper carefully and then attempt it.

Q1. Give reason for the following statements.

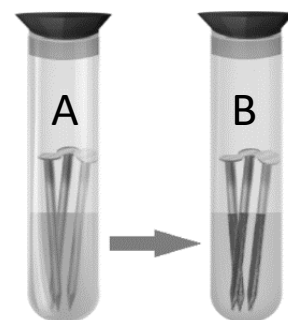
(9)

- a. INS Arihant, a type of submarine is made from alloys rather than iron.
- b. In bakery products, baking soda and vinegar are often used.
- c. The growth of a baby into a child and then into an adolescent, and finally into an adult is a chemical change.
- d. Xylem tissue functions only in one direction.
- e. Exchange of gases, food and other substances occurs between arteries and veins.
- f. Pollination is the most important step in sexual reproduction.
- g. It takes only few days for a patch of land can be covered with grass.
- h. There are different factors which effect the time period in pendulum.
- i. Dry fruits do not get spoilt as compare to fresh vegetables.

Q2. Observe the picture and answer the following questions.

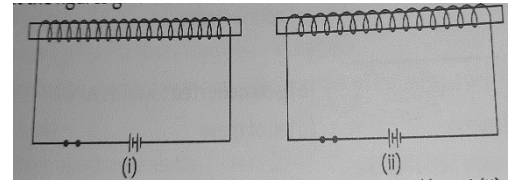
I. In the solution A, of copper sulphate Iron nails are dropped. (2)

- a. Name the type of change which occurred.
- b. Write the name of the solution in test tube B.
- c. Which metal is deposited on Iron nail.
- d. Write the equation to depict the change in the picture.



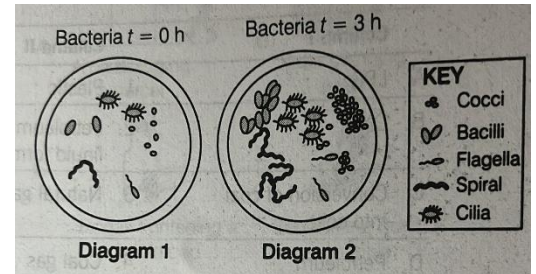
II. Salim and Kashvi tried to make electromagnets by coiling a wire around magnetic material.

- a. Out of i. and ii. Which one is the stronger magnet and why? (1)
- b. Write two disadvantages of permanent magnet over electromagnets. (1)



III. The diagram represents samples of bacteria growing in a dish of nutrient. Diagram 2 shows sample after three hours.

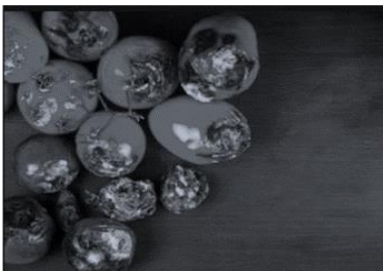
- a. What are the favorable conditions for bacteria to multiply. (1)
- b. Which type of bacterium is multiplying the most? (1)
- c. Which type of medicines should be used to decrease the growth of bacteria in the body? Explain. (1)



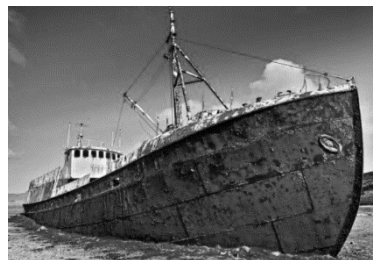
Q3. Observe the pictures given below and answer the following questions.

A. Identify the **type of changes** and **define the process** involved in the change. (2)

a. Spoiled tomato

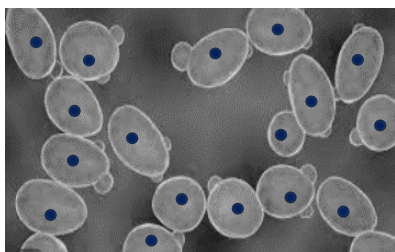


b. Tarnished metal of ship



B. Name the **type of reproduction** and **define** them. (2)

a. Used to make alcohol



b. Money Plant



C. Identify the type of seed dispersal in the pictures given below and write two characteristics of each seed. (3)

a.



b.



- Q4. a. A simple pendulum covered 50 oscillations in 10 sec. Find the time period of the pendulum. (1)
- b. A train is travelling at a speed of 110 km/hr. How long will it take to complete a journey of 605 km without any stoppage in between? (2)
- c. The speed of fastest running animal Cheetah is 112km/hr. Express the speed in m/s. (2)
- d. Write two points of difference between virus and bacteria. (2)
- Q5. a. Write two advantages and two disadvantages of asexual reproduction. (4)
- b. Write two reasons due to which there can be sudden power cut in the household? (2)
- c. Name any two communicable diseases. Write two ways to prevent them. (3)
- Q6. a. Differentiate between parallel connection and series connection. Draw the electric circuits to support your answer. (2)
- b. Name the material used in : (2)
- i. making filament of electric bulb and
- ii. heating element of electric geyser.
- Q7. While learning to ride a bicycle, Boojho lost his balance and fell. He got bruises on his knees and it started bleeding. However, the bleeding stopped after sometime. (4)
- a. Why did the bleeding stop?
- b. Name the pigment responsible for red colour of blood. Write it's role.
- c. Name the type of blood cells which is responsible for clotting of blood.
- D. How are antibiotics different from antibodies present in body? Explain.
- Q8. Draw a well labelled diagram excretory systems of humans. (4)

OR

Draw the diagram of electric bell and label any four parts of the bell.

Q9. Draw the diagram of human heart and label any four parts. (3)

Q10. Draw the distance time graph with the help of table given below. (3)

Distance (m)	0	12	14	16	24
Time (s)	0	5	10	15	20

Answer the following questions.

- a. Which time of motion is exhibited by the object? (1)
- b. Calculate the average speed of the object. (2)